



W L I V E

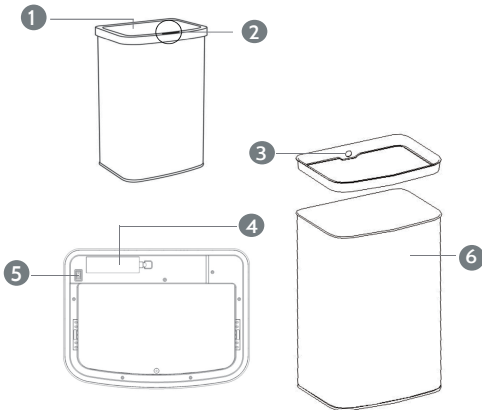
# CLJT006 Trash can

V1.0

Please be sure to properly save the manual for confirmation at any time.

Before using, please carefully read the manual and use it on the basis of full understanding.

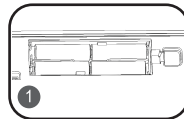
## PARTS LIST:



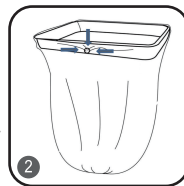
- 1. TRASH CAN LID
- 2. SENSOR AND TOUCH CONTROL AREA
- 3. SMART TRASH BAG RETAINER RING
- 4. BATTERY COMPARTMENT
- 5. ON/OFF SWITCH
- 6. TRASH CAN BODY WITH LID REMOVED

## INSTRUCTIONS:

1. Insert batteries into the battery compartments.  
Align the batteries according to the positive and negative ends.



2. To insert a trash bag. Take off the lid and put a trash bag into the body of the trash can. Fold the top of the trash bag around the bag holder ring and place back onto the trash can body. Turn on the power switch on the back of the lid and replace the lid which will conceal the trash bag folded around the bag holder ring for a neat appearance.



3. When placing a hand or object over the sensor area, the lid opens automatically and quietly closes within 6 seconds after the object is removed from the sensor detection range.



## OPERATING MODES:

1. Turn ON the power switch on the back of the lid for energy saving standby sensor mode. A blue indicator light flashes every 6 seconds.
2. When the sensor detects a hand or object waved within 15cm (6 inches) of the sensor area, the lid automatically opens and the indicator light shows blue. When an object is removed from the sensor range, the lid automatically closes and the indicator light shows blue.
3. The lid can be opened and closed manually for longer chores by pressing the open and close buttons in the sensor area. The lid will stay open until the close button is pressed. While the lid is opened manually, the indicator light flashes blue every 6 seconds.
4. When the batteries need replacing, the indicator light flashes red every 6 seconds.

## MAINTENANCE AND PRECAUTIONS:

1. Do not manually force the lid to close which will damage the motor and internal gears in the lid.
2. When installing the batteries, make sure that the positive (+) and negative (-) ends are in the correct position as indicated in the battery compartment.
3. The product uses 4 "AA" size batteries. Use high quality, well-known brand batteries for normal operation and prolonged life of the product. High-performance alkaline batteries can be used for up to 10,000 openings and closings. Do not mix old and new batteries or mix alkaline, standard zinc-carbon or rechargeable NiCad or NiMH batteries. Replace the batteries when the lid begins to open very slowly or if not used for a long time to prevent leakage and damage to the product.
4. The product is meant for use in a dry indoor environment. Do not use in a high temperature (over 45 degrees Celsius, 113 Fahrenheit) or very humid environment, exposed to direct sunlight or wind which will cause the lid to open unnecessarily.
5. Do not submerge the trash can lid in water which will damage the electrical components. The lid and body of the trash can be cleaned with a damp cloth. Do not use an abrasive cleanser which will remove the fingerprint free protection.

